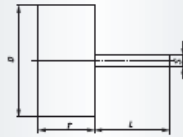
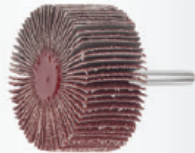




Industry

SFL, Flap wheels

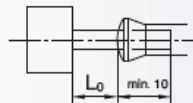
Ordering example: A2200020103120



Packing unit
10 pcs. per type
Further dimensions, qualities
and shank lengths on request
NK - reg. Aluminium Oxide

Description	Grits	D mm	T mm	S mm	L mm	n _{recom.} (1/min)	n _{max.} (1/min)	Product-Number	recommended for
SFL 02010.03	NK 120	20	10	3	40	20.000	28.000	A2200020103120	1 2 3 4 5 6 7 8
SFL 02010.03	NK 150	20	10	3	40	20.000	28.000	A2200020103150	1 2 3 4 5 6 7 8
SFL 02010.03	NK 320	20	10	3	40	20.000	28.000	A2200020103320	1 2 3 4 5 6 7 8
SFL 02010.06	NK 80	20	10	6	40	20.000	28.000	A2200020106080	1 2 3 4 5 6 7 8
SFL 02010.06	NK 120	20	10	6	40	20.000	28.000	A2200020106120	1 2 3 4 5 6 7 8
SFL 02015.06	NK 60	20	15	6	40	20.000	28.000	A2200020156060	1 2 3 4 5 6 7 8
SFL 02015.06	NK 80	20	15	6	40	20.000	28.000	A2200020156080	1 2 3 4 5 6 7 8
SFL 02015.06	NK 120	20	15	6	40	20.000	28.000	A2200020156120	1 2 3 4 5 6 7 8
SFL 02015.06	NK 150	20	15	6	40	20.000	28.000	A2200020156150	1 2 3 4 5 6 7 8
SFL 02015.06	NK 240	20	15	6	40	20.000	28.000	A2200020156240	1 2 3 4 5 6 7 8
NEW SFL 02020.06	NK 80	20	20	6	40	20.000	28.000	A2200020206080	1 2 3 4 5 6 7 8
SFL 02505.03	NK 120	25	5	3	40	18.000	18.000	A2200025053120	1 2 3 4 5 6 7 8
SFL 02510.03	NK 80	25	10	3	40	18.000	18.000	A2200025103080	1 2 3 4 5 6 7 8
SFL 02510.03	NK 120	25	10	3	40	18.000	18.000	A2200025103120	1 2 3 4 5 6 7 8
SFL 02510.03	NK 150	25	10	3	40	18.000	18.000	A2200025103150	1 2 3 4 5 6 7 8
NEW SFL 02510.06	NK 80	25	10	6	40	18.000	18.000	A2200025106080	1 2 3 4 5 6 7 8
NEW SFL 02510.06	NK 120	25	10	6	40	18.000	18.000	A2200025106120	1 2 3 4 5 6 7 8
SFL 02515.06	NK 80	25	15	6	40	18.000	18.000	A2200025156080	1 2 3 4 5 6 7 8
SFL 02515.06	NK 120	25	15	6	40	18.000	18.000	A2200025156120	1 2 3 4 5 6 7 8
SFL 02515.06	NK 150	25	15	6	40	18.000	18.000	A2200025156150	1 2 3 4 5 6 7 8
NEW SFL 02520.06	NK 80	25	20	6	40	18.000	18.000	A2200025206080	1 2 3 4 5 6 7 8
NEW SFL 02520.06	NK 120	25	20	6	40	18.000	18.000	A2200025206120	1 2 3 4 5 6 7 8
SFL 02525.06	NK 80	25	25	6	40	18.000	18.000	A2200025256080	1 2 3 4 5 6 7 8
SFL 02525.06	NK 150	25	25	6	40	18.000	18.000	A2200025256150	1 2 3 4 5 6 7 8
SFL 03005.03	NK 60	30	5	3	40	18.000	18.000	A2200030053060	1 2 3 4 5 6 7 8
SFL 03005.03	NK 80	30	5	3	40	18.000	18.000	A2200030053080	1 2 3 4 5 6 7 8
SFL 03005.03	NK 120	30	5	3	40	18.000	18.000	A2200030053120	1 2 3 4 5 6 7 8
SFL 03005.03	NK 150	30	5	3	40	18.000	18.000	A2200030053150	1 2 3 4 5 6 7 8
SFL 03005.03	NK 240	30	5	3	40	18.000	18.000	A2200030053240	1 2 3 4 5 6 7 8
SFL 03005.03	NK 320	30	5	3	40	18.000	18.000	A2200030053320	1 2 3 4 5 6 7 8
SFL 03005.06	NK 60	30	5	6	40	18.000	18.000	A2200030056060	1 2 3 4 5 6 7 8
SFL 03005.06	NK 80	30	5	6	40	18.000	18.000	A2200030056080	1 2 3 4 5 6 7 8

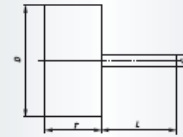
The stated maximum operating speed only applies to a maximum overhang L_0 of 20 mm. Other overhang dimensions must be calculated separately.



Industry

SFL, Flap wheels

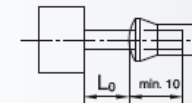
Ordering example: A2200030056120



Packing unit
10 pcs. per type
Further dimensions, qualities
and shank lengths on request
NK - reg. Aluminium Oxide

Description	Grits	D mm	T mm	S mm	L mm	n _{recom.} (1/min)	n _{max.} (1/min)	Product-Number	recommended for
SFL 03005.06	NK 120	30	5	6	40	18.000	18.000	A2200030056120	1 2 3 4 5 6 7 8
SFL 03005.06	NK 150	30	5	6	40	18.000	18.000	A2200030056150	1 2 3 4 5 6 7 8
SFL 03005.06	NK 240	30	5	6	40	18.000	18.000	A2200030056240	1 2 3 4 5 6 7 8
SFL 03005.06	NK 320	30	5	6	40	18.000	18.000	A2200030056320	1 2 3 4 5 6 7 8
SFL 03010.03	NK 60	30	10	3	40	18.000	18.000	A2200030103060	1 2 3 4 5 6 7 8
SFL 03010.03	NK 80	30	10	3	40	18.000	18.000	A2200030103080	1 2 3 4 5 6 7 8
SFL 03010.03	NK 120	30	10	3	40	18.000	18.000	A2200030103120	1 2 3 4 5 6 7 8
SFL 03010.03	NK 150	30	10	3	40	18.000	18.000	A2200030103150	1 2 3 4 5 6 7 8
SFL 03010.03	NK 240	30	10	3	40	18.000	18.000	A2200030103240	1 2 3 4 5 6 7 8
SFL 03010.03	NK 320	30	10	3	40	18.000	18.000	A2200030103320	1 2 3 4 5 6 7 8
SFL 03010.06	NK 60	30	10	6	40	18.000	18.000	A2200030106060	1 2 3 4 5 6 7 8
SFL 03010.06	NK 80	30	10	6	40	18.000	18.000	A2200030106080	1 2 3 4 5 6 7 8
SFL 03010.06	NK 120	30	10	6	40	18.000	18.000	A2200030106120	1 2 3 4 5 6 7 8
SFL 03010.06	NK 150	30	10	6	40	18.000	18.000	A2200030106150	1 2 3 4 5 6 7 8
SFL 03010.06	NK 240	30	10	6	40	18.000	18.000	A2200030106240	1 2 3 4 5 6 7 8
SFL 03010.06	NK 320	30	10	6	40	18.000	18.000	A2200030106320	1 2 3 4 5 6 7 8
SFL 03015.06	NK 60	30	15	6	40	18.000	18.000	A2200030156060	1 2 3 4 5 6 7 8
SFL 03015.06	NK 80	30	15	6	40	18.000	18.000	A2200030156080	1 2 3 4 5 6 7 8
SFL 03015.06	NK 120	30	15	6	40	18.000	18.000	A2200030156120	1 2 3 4 5 6 7 8
SFL 03015.06	NK 150	30	15	6	40	18.000	18.000	A2200030156150	1 2 3 4 5 6 7 8
SFL 03020.06	NK 40	30	20	6	40	18.000	18.000	A2200030206040	1 2 3 4 5 6 7 8
SFL 03020.06	NK 60	30	20	6	40	18.000	18.000	A2200030206060	1 2 3 4 5 6 7 8
SFL 03020.06	NK 80	30	20	6	40	18.000	18.000	A2200030206080	1 2 3 4 5 6 7 8
SFL 03020.06	NK 120	30	20	6	40	18.000	18.000	A2200030206120	1 2 3 4 5 6 7 8
SFL 04010.03	NK 60	40	10	3	40	12.000	18.000	A2200040103060	1 2 3 4 5 6 7 8
SFL 04010.03	NK 80	40	10	3	40	12.000	18.000	A2200040103080	1 2 3 4 5 6 7 8
SFL 04010.03	NK 120	40	10	3	40	12.000	18.000	A2200040103120	1 2 3 4 5 6 7 8
SFL 04010.03	NK 150	40	10	3	40	12.000	18.000	A2200040103150	1 2 3 4 5 6 7 8
SFL 04010.06	NK 60	40	10	6	40	12.000	18.000	A2200040106060	1 2 3 4 5 6 7 8
SFL 04010.06	NK 80	40	10	6	40	12.000	18.000	A2200040106080	1 2 3 4 5 6 7 8
SFL 04010.06	NK 120	40	10	6	40	12.000	18.000	A2200040106120	1 2 3 4 5 6 7 8
SFL 04010.06	NK 150	40	10	6	40	12.000	18.000	A2200040106150	1 2 3 4 5 6 7 8

The stated maximum operating speed only applies to a maximum overhang L_0 of 20 mm. Other overhang dimensions must be calculated separately.



Navigation bar with icons for back, forward, search, and zoom. Zoom level: 71.1%

